



**SUR-FLO**  
METERS & CONTROLS LTD.

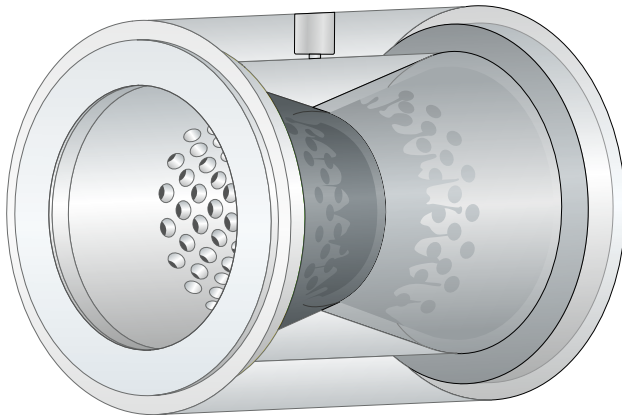
# SF10V CONTROL VALVE

Sur-Flo Meters & Controls Ltd.  
4520 - 50 Avenue SE  
Calgary, Alberta T2B 3R4

Toll Free 1-877-527-8977  
Office 403 207-9715  
Fax 403 207-9440

Canadian Inquiries: sales@sur-flo.net  
US Inquiries: salesUSA@sur-flo.net

[www.sur-flo.net](http://www.sur-flo.net)



### ADVANTAGES

- Uses process gas
- Green technology – no venting – no emissions
- No spring and diaphragm
- Small footprint
- Four main components interchangeable between applications
- Ease of repair reduces downtime and maintenance costs

### SPECIFICATIONS

Standard Valve Sizes	1" to 10" (for larger sizes, contact Sur-Flo)
Pressure Rating	Up to 2500 ANSI
Valve Temperature Range	-45°C – 205°C, -50°F – 400°F
Process Connections	Raised Faced Flanged, Wafer Style
Housing Material	Carbon Steel, Stainless Steel
Sleeve Material	HSN, Viton, EPDM
Cone Material	Stainless Steel, Tool Steel

### SLEEVE MATERIAL

Cone Assembly	SLEEVE MATERIAL			Continuous Pressure Drop	
	SF55 HSN	SF75 Viton or HSN	SF75H Viton H or HSN		
S43	X			430 kpa	62 psi
S43		X		860 kpa	124 psi
S43			X	1375 kpa	199 psi
S63	X			1215 kpa	176 psi
S63		X		2430 kpa	352 psi
S63			X	3890 kpa	564 psi
S83	X			2415 kpa	350 psi
S83		X		4830 kpa	700 psi
S83			X	7730 kpa	1121 psi
S93			X	8400 kpa	1218 psi
S10			X	13790 kpa	2000 psi